

NORTH PUGET SOUND



A-Z Free & Low-Cost Summer Activity Guide



***Created by Everett Housing Authority's
Resident Services Department***



Table of Contents

ADA Accessible Interpretive Trails & Boardwalks	3
ADA Playgrounds	3
ADA Accessible Recreation	4
ADA Shorelines & Fishing	5
ADA Parks, Mature Trails & Viewpoints	6
Arboretum/Gardens	7
Art Walks	8
Ball Fields	9
Basketball Courts	9
Beach Access	10
BMX Track	11
Car Shows	11
Community Events/Classes for Children & Parents	12
Community Garage Sales	15
Cultural Events	15
Disc Golf	17
Dog Parks - Off Leash	17
Estuaries	18
Farmers Markets EBT Match	18
Festivals & Street Fairs	19
Fishing	20
Food Trucks	21
Horseshoes	21
Interpretive Trails/Boardwalks	21
Labyrinths	21
Low-Cost Activities	22
Mountain Bike Trails	27
Movies	27
Music	28
Nature Preserves & Interpretive Centers	30
Nature Trails	31
Outdoor Fitness Stations	33
Pickleball Courts	33
Skate Parks	33
Soccer Fields	34
Sunset/Vistas	34
Swimming	35
Tennis Courts	36
Urban Walking & Biking Trails	36
Water Access	38
Water Playgrounds/Splash Pads	39
Volleyball Court	39
Volunteer Opportunities	39
Wetlands	40
Wildlife Viewing	40

ADA ACCESSIBLE INTERPRETIVE TRAILS & BOARDWALKS

Lake Cassidy

6216 105th Ave. NE, Lake Stevens

Martha Lake Park

16300 E. Shore Drive, Lynnwood

North Creek Park and Water Retention Facility

1011 183rd St. SE, Mill Creek

Shadow of the Sentinels Interpretive Site

Directions: Turn north from Highway 20 onto Baker Lake Road. After 15 miles, you will see the trailhead and parking area located on the right past the Komo Kulshan Guard Station.



ADA PLAYGROUNDS

Esperance Park

7830 224th SW, Edmonds

Forest Park

802 E. Mukilteo Blvd., Everett

Skykomish River Park

413 Sky River Pkwy., Monroe

Lake Stickney Community Park

13521 Manor Way, Lynnwood

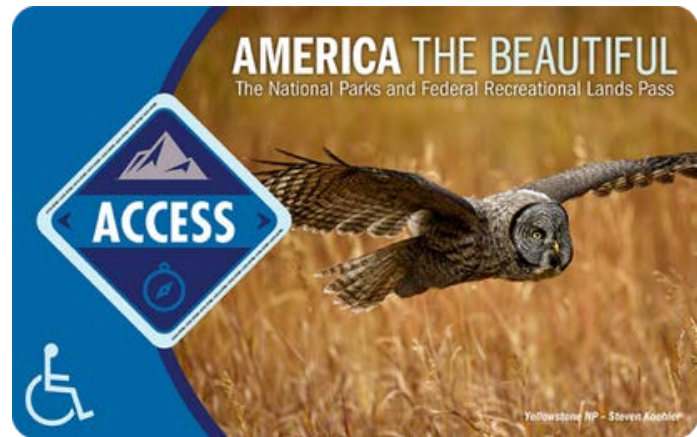
Miner's Corner

22903 45th Ave. SE, Bothell



America the Beautiful Access Pass

Free, lifetime pass – available to U.S. citizens or permanent residents of the United States that have been medically determined to have a permanent disability (DOES NOT HAVE TO BE 100% DISABILITY) INCLUDES STUDENTS WITH IEP's.



Provides entrance or access to State and Federal, National Parks and accompanying passengers in a single, private, non-commercial vehicle at federal operated recreation sites across the country. Half-price camping at participating locations at <https://www.recreation.gov/>. Photo identification may be required to verify ownership.

Purchase online for \$10:

May be obtained free in-person at a federal recreation site:

Darrington Ranger District

1405 Emens Ave. N, Darrington
(360) 463-1155
Mon-Fri 8AM-4PM

Skykomish Ranger District

74920 NE Stevens Pass Hwy
(360) 677-2414
Tues-Sat 9AM-4PM

Mt. Baker Ranger District

810 State Route 20, Sedro-Woolley
(360) 854-2553
Tues-Sat 8AM-4PM

Verlot Public Service Center

33515 Mtn. Loop Hwy, Granite Falls
(360) 691-7791
Mon-Sat 8AM-4PM

Washington State Parks Senior with Limited Income Pass

Offered to Washington State residents who are 62 years or older with a limited household income. Information and application [here](#).

Benefits:

- Free entry to state parks.
- Free watercraft launch.
- Free trailer dump.
- 50% discount on nightly camping or moorage fees
- 50% reduction in fee for the Senior Off-Season Pass

Ebey Waterfront Park

6216 105th Ave. NE, Lake Stevens

Gissberg Twin Lakes

16324 Twin Lake, Marysville

Lake Cassidy

6216 105th Ave. NE, Lake Stevens

[Request Access Here](#)

Lake Goodwin Community Park

4620 Lakewood Rd., Stanwood

Langus Riverfront Park

400 Smith Island Rd., Everett

Lowell Riverfront Park

Lowell-Snohomish River Rd., Everett

Meadowdale Beach Park

6026 E. Shore Dr., Lynnwood

Martha Lake

16300 E. Shore Dr., Lynnwood

River Meadows Park & Campground

20416 Jordan Rd., Arlington

Rotary Park

3505 Lowell-Snohomish River Rd., Everett

Spencer Island

5033 4th St. SE, Everett

Skykomish River Park

413 Sky River Pkwy., Monroe

Wenberg County Park

15430 E. Lake Goodwin Rd., Stanwood



Bayview Trail

West of 83rd Ave. NE, Between 62nd St. NE and 84th St. NE, Marysville

Centennial Park

200 Block of Division St., Arlington

Forest Park

802 E. Mukilteo Blvd., Everett

Forest Trail Park

18005 Oxford Dr., Arlington

Hauge Homestead Park

1819 121st St. SE, Everett

Jennings Nature Park

6309 53rd Ave. NE, Marysville

Jensen Park

7801 Jensen Farm Lane, Arlington

Langus Riverfront Park

400 Smith Island Rd., Everett

Lake Stevens Community Park

1601 N. Machias Rd., Lake Stevens

Logan Park

1411 Logan Rd., Lynnwood

Lowell Riverfront Park

Lowell-Snohomish River Rd., Everett

Narbeck Wetland Sanctuary Park

6900 Seaway Boulevard, Everett

North and South View Parks

600 W. Marine View Dr., Everett

Rotary Park

3505 Lowell-Snohomish River Rd., Everett

Spencer Island

5033 4th St. SE, Everett

Skykomish River Park

413 Sky River Pkwy., Monroe

Tambark Creek Park

17217 35th Ave. SE, Bothell

Twin Rivers Park

8003 SE 530th NE, Arlington

Whitehorse Park & Campground

46609 N Mountain Rd., Darrington

Willis D. Tucker Community Park

6705 Puget Park Dr., Snohomish



Evergreen Arboretum & Gardens

145 Alverson Blvd., Everett

Nishiyama Japanese Garden

905 Wetmore Avenue

everettjcrc@everettcc.edu

(425) 388-9195

Rhody Ridge Foundation

Monday-Sunday, 10AM-6PM

17427 Clover Rd., Bothell

(425) 273-0014

rhodyridgefoundation@gmail.com

Seattle Japanese Gardens

1075 Lake Washington Blvd. E, Seattle

Tuesdays-Sunday, 10AM-5PM (Opens at noon on August 3)

Adults 18-64: \$10

Youth 6-17, Seniors 65+, Students, Adaptive, Military ID: \$6

Children 5 and under: FREE

Washington Park Arboretum

2300 Arboretum Dr. E, Seattle

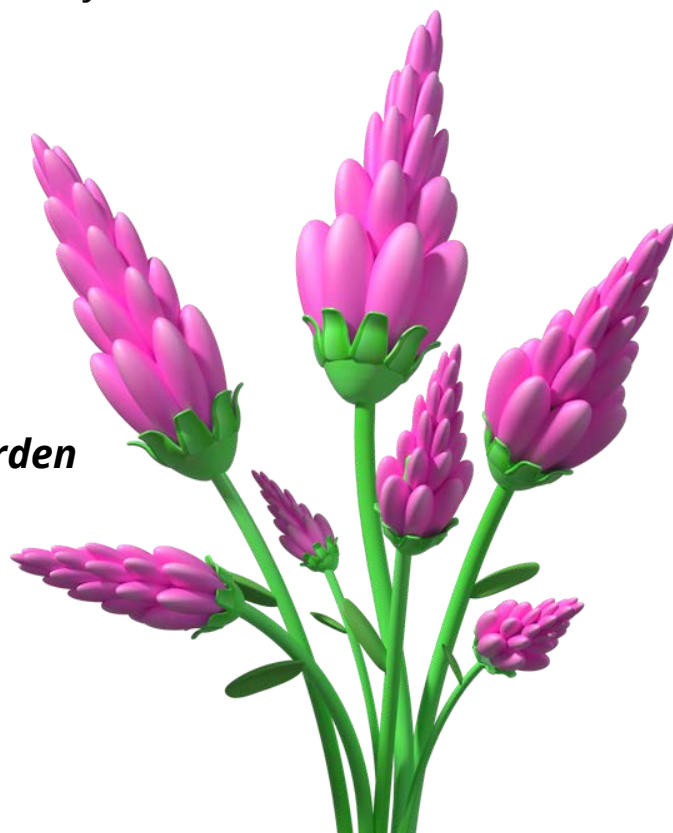
1st Thursday Free Arboretum Walking Tours

11:30AM-1PM

WSU Master Gardeners Demonstration Garden

Jennings Park - 6915 Armar Rd., Marysville

Entrance behind playground



City of Everett Sculpture Map

[Click here](#) to view the map

Edmonds Art Walk

Third Thursday of every month - 5PM-8PM

Map updated monthly: www.artwalkedmonds.com

Evergreen Arboretum & Gardens

Sculpture Garden

145 Alverson Blvd., Everett

Fremont First Friday Art Walk - Seattle

View the [map here](#)

Snohomish County Public Art

Locations found on the [Snohomish County Arts Commission site](#)

MoonWater Art

First Friday art walk

July 7 - 6PM-8PM

404 Commercial Ave., Anacortes

Quilt & Art Walk - Jennings Nature Park

August 1 - 4PM-7PM

6309 53rd Ave., Marysville

Enjoy a beautiful stroll in the park admiring the amazing quilts as well as the wonderful works of art by several different artists and Art forms as they hang displayed along the path. The walk will take you from the Ball Fields (5500 70th St) to the Nature Park (6309 53rd Ave). Please park at either of these locations.

Sandblast Festival of the Arts - McCormick Park

July 22 & 23

26200 NE Stephens St., Duvall

Family fun activities with a sand sculpture contest



BALL FIELDS

Bill Quake Memorial Park

18501 59th Ave. NE, Arlington

Fairfield County Park

15532 Fryelands Blvd. SE, Monroe

Forsgren Park

23109 Carter Rd., Bothell

Garfield Park

2300 Walnut St., Everett

Henry M. Jackson Park

3302 18th St., Everett

Kasch Park

8811 Airport Rd., Everett

Lake Stevens Community Park

1601 N Machias Rd., Lake Stevens

Legion Memorial Park

145 Alverson Blvd., Everett

Logan Park

1411 Logan Rd., Lynnwood

Martha Lake Airport Park

200 146th St. W, Lynnwood

McCollum Pioneer Park

600 128th St. SE, Everett

Paine Field Community Park

11928 Beverly Park Rd., Everett

Skykomish River Park

413 Sky River Pkwy., Monroe

Tambark Creek Park

17217 35th Ave. SE, Bothell



BASKETBALL COURTS

Garfield Park

2300 Walnut St., Everett

Henry M. Jackson Park

3302 18th St., Everett

Legion Memorial Park

145 Alverson Blvd., Everett

Wiggums Hollow Park

2808 10th St., Everett



Anacortes Public Access

South Shore Rd., Anacortes

Edgewater Beach Park

1504 1st St., Everett

Jetty Island - July 5-September 3

10th St. and Marine View Dr.

[Ferry Reservation Required](#)

\$3-\$5 parking and ferry fee

Howarth Park

1127 Olympic Blvd., Everett

Iverson Trail Preserve

3 Iverson Rd., Camano Island

Lighthouse Park

4902 76th St. SW, Mukilteo

Mabana Beach

Hidden Shores & Mabana Rd., Camano Island

Meadowdale Beach Park

6026 156th SW, Edmonds

North and South View Parks

600 W Marine View Dr., Everett

Picnic Point Park

7231 Picnic Point Rd., Edmonds

Pigeon Creek Trail

3501 Pigeon Creek Rd., Everett

Richard Beach Saltwater Park

2021 NW 190th St., Shoreline



BMX TRACK

McCollum Pioneer Park

600 128th St. SE, Everett

CAR SHOWS

Angel of the Winds Casino Resort 5th Annual Car Show

Sunday, August 13 - 10AM-3PM

3437 Stoluckquamish Ln., Arlington

Cruise-In Car Show - Windermere Real Estate

Saturday, July 29 - 10AM-3PM

18323 Bothell Everett Hwy., Bothell

Edmonds Classic Car Show

Sunday, September 10 - 5PM-11PM

121 5th Ave. N, Edmonds

Show n' Shine

Saturday, August 5 - 4PM-10:30PM

215 S Granite Ave., Granite Falls

Nile Car Show - Nile Shrine Golf Course

Saturday, July 15 - 8AM-4PM

6601 244th St. SW, Mountlake Terrace

Northlake Christian Church Car Show

Sunday, August 6 - 10AM-2PM

19029 North Rd., Bothell

Relay for Life Car Show - Everett Mall

Sunday, August 20 - 10AM-4PM

1402 SE Everett Mall Way, Everett

Smith Family Tour De' Terrace Car Show

Saturday, July 22, 9AM-1PM

5600 228th St. SW, Mountlake Terrace

Wheels on the Waterfront - Boxcar Park

Saturday, August 26, 8AM-4PM

615 13th St., Everett



Everett Public Library

Free family and children's events - [information here](#)

Main Library: 2702 Hoyt Ave., Everett

Reference: (425) 257-8000

Circulation: (425) 257-8010

Youth Services: (425) 257-8030

Hours:

Monday	CLOSED
Tuesday	10AM-8PM
Wednesday	10AM-6PM
Thursday	10AM-8PM

Friday	10AM-6PM
Saturday	10AM-8PM
Sunday	CLOSED

Evergreen Branch

9512 Evergreen Way, Everett

Reference: (425) 257-8250

Circulation: (425) 257-8260

Hours:

Monday	CLOSED
Tuesday	10AM-8PM
Wednesday	10AM-6PM
Thursday	10AM-8PM

Friday	10AM-6PM
Saturday	10AM-8PM
Sunday	CLOSED



Home Depot

Free Kids Workshops first Saturday of the month - 9AM-12PM

Sign up required: <https://www.homedepot.com/workshops/>

Upcoming event:

August 5 - Treasure Chest

Locations:

Everett - 11915 Hwy 99

Lynnwood - 2901 184th St. SW

Snohomish - 2601 Bickford Ave.

Tulalip - 9310 Quil Ceda Blvd.





Lake Tye Science Day

Saturday, July 29 - 10AM-12PM

14964 Frylands Blvd., Monroe

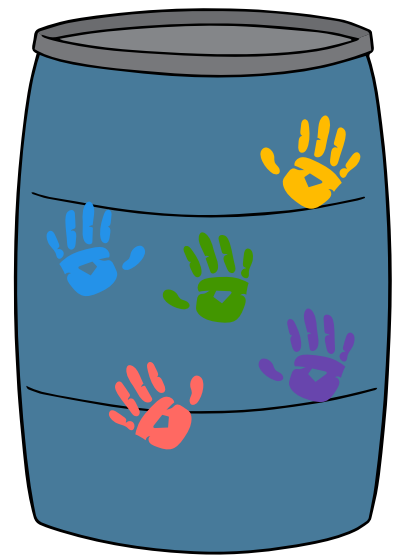
Take part in science demonstrations, hands-on activities, and games about the many wonderful ways we can help create clean water for everyone! Learn more [here](#).

I Love Lake Day - Lundeen Park

Saturday, August 19 - 10:30AM-12:30PM

10020 Lundeen Park Way, Lake Stevens

Rain Barrel painting, food trucks, and lots of fun family-friendly games and activities! Learn more [here](#).



Lowe's

Free Kids Workshops Saturdays - 10AM-1PM

Register online: <https://www.lowes.com/diy-projects-and-ideas/workshops>

Upcoming events:

August 12 - Rolling Toy Pickup Truck

September 16 - Home Team Football Card Holder

October 14 - Heroic Fire Truck

Locations:

Everett - 2505 Pacific Ave.

Lynnwood - 3100 196th SW

Smokey Point - 3300 169th Pl. NE



Michaels Crafts

Sunday Makebreak - Free In-Store Craft Events
Sundays - 2PM-4PM

Upcoming events:

July 23 - Teacher's Door Hanger

July 30 - Sakura Gelly Roll Handmade Gift Tags

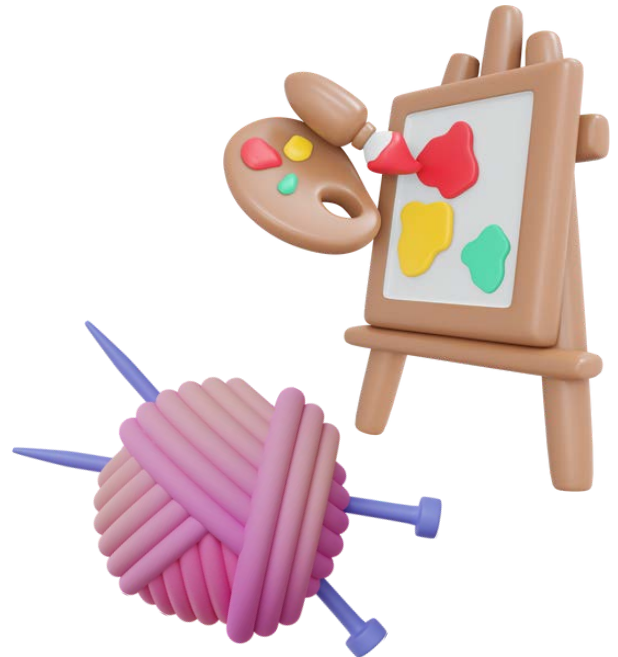
Other free in-store events [here](#)

Locations:

Everett Mall Plaza - 1325 B SE Everett Mall Way

Lake Stevens - 519 St. Rte. 9 NE

Lakewood Crossing - 16418 Twin Lakes Ave.



Providence Children's Center

900 Pacific Ave., Everett (Next to Women's Pavilion)

Call for current schedule: (425) 258-7311

More information on [their website](#)

Free Classes for kids of all ages to explore their interests and socialize with their parents close by. Parents have a chance to meet other parents, take part in your child's learning, and have fun as a family. Classes provide opportunities for children and parents to play together while focusing on different areas of development in a social situation. Parents have a chance to meet other parents, take part in your child's learning and have fun as a family.

Silvana Community Fair

Saturday, July 29 - 9AM-6PM

1331 Pioneer Highway, Stanwood

Enjoy a delightful day in the beautiful Stillaguamish River Valley at the Silvana Community Fair. Curious about livestock care or where your local food comes from? Ask us and the many other groups who will be there to chat with you.



COMMUNITY EVENTS/CLASSES FOR CHILDREN & PARENTS

Sno-Isle Libraries

Marysville Library - 6120 Grove St., Marysville

Phone: (360) 658-5000

Events and information: <https://www.sno-isle.org/>

Fax: (360) 659-5050

Contact-Free Pickup: (360) 651-7188

Hours:

Monday 9AM-8PM

Friday 10AM-6PM

Tuesday 9AM-8PM

Saturday 10AM-6PM

Wednesday 9AM-8PM

Sunday 1PM-5PM

Thursday 9AM-8PM

Summer Lunches - Free Meals July 5-August 1

Everett Boys and Girls Club

2316 12th St., Everett

11:30AM-12PM

Snack: 2PM-2:15PM

Everett Public Library

2702 Hoyt, Everett

12PM-12:30PM

Forest Park

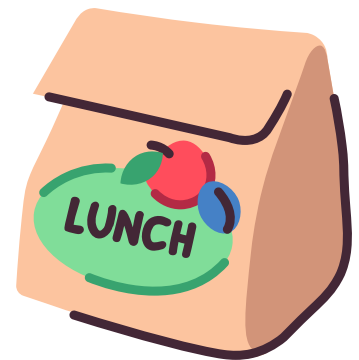
802 E. Mukilteo Blvd., Everett

11:15AM-11:45AM

Our Lady of Hope

2619 Cedar St., Everett

12:15PM-12:45PM



Touch a Truck - Marysville

Saturday, September 9

10AM-1PM

1605 7th St. NE

Horns and sirens from

10AM-12PM

More [information on their site](#)

Touch A Truck

Saturday, September 9

10AM-1PM • No Horns 12-1PM

Asbery Field, FREE for all Ages

Please leave pets at home.



COMMUNITY GARAGE SALES

Northwest Neighborhood's Mother of All Garage Sales

Saturday, August 5 - 9AM-4PM

Drew Nielsen Park - Colby & 13th St.

Hibulb Cultural Center

6410 23rd Ave. NE, Tulalip
[Website updated](#) monthly

Several community events available with entry fee

Hibulb Members or Tulalip Tribal Members: Free

Adults (ages 18-49): \$10 Students (ages 6-17): \$6

Elders (ages 50+): \$7 Children (ages 5 & under): Free

Active Military, Veterans: \$6

Family (2 adults & up to 4 children): \$25

Ribbon Skirts

July 15 - 12PM-4PM - Classroom 1

Led by: Alice Oligario (Nanaimo Nation)

Create a beautiful skirt to take home.

We'll provide the sewing machines!

WHAT YOU NEED TO BRING:

- 2 yards of 100% cotton fabric
- Thread to match fabric
- 2-3 extra-wide spools of colored ribbon
- Spool of elastic

Weaving Gatherings

Wednesdays - 5PM-7PM

July 19 and 26 - Classroom 1

A weekly open forum for those interested in bringing weaving materials to work on projects. A time to visit, share, build skills and complete your beautiful woven art. *Weaving kits available for purchase.*

Kids Craft

Saturdays 3PM-4PM Canoe Hall

Next event:

July 22 - Paddle Necklace

Dream Catchers

July 29 - 12PM-4PM - Classroom 1

Led by: Dinesha Kane (Tulalip)

Create your own beautiful dream catcher to take home

Seafair Indian Days Powwow - July 21-23

Friday Family Night, July 21 - 4PM-10PM

Saturday, July 22 - 10AM-10PM

Sunday, July 23 - 10AM-6PM

Nubian Jam - July 29

10AM-7PM

Forest Park

Celebrate Everett's diversity and enjoy a day of family fun, music, community and African American culture. Includes inspirational speakers, dance and varied live performances, art, shopping, food and more. Learn [more here](#).



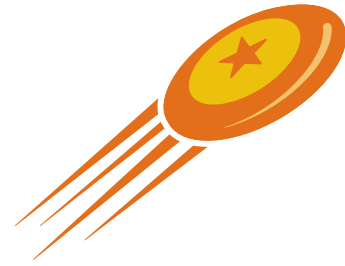
DISC GOLF

Twin Rivers Park

8003 SE 530th NE, Arlington

Thornton Sullivan Park

11405 Silver Lake Rd., Everett



DOG PARKS - OFF-LEASH

Stormwater Wetlands Park/Eagle Trail

1100 West Ave., Arlington

Esperance Park

7830 224th SW, Edmonds

Tambark Creek Park

17217 35th Ave. SE, Bothell

Howarth Park

1127 Olympic Blvd., Everett (*beachfront dog area over train bridge to right*)

Lake Stickney Community Park

13521 Manor Way, Lynnwood

Strawberry Fields for Rover

6100 152nd St. NE, Marysville (*Shy dog area in main off-leash area*)

Cavalero Hill Park

7708 20th St. SE Lake Stevens (*has shy dog park*)

Willis D. Tucker Community Park

6705 Puget Park Dr., Snohomish

3 Dog Park Areas - Open off-leash, shy dog, forested area

Lowell Park

4605 S 3rd Ave., Everett

Martha Lake Airport Park

200 146th St. W, Lynnwood

Henry Jackson Park

3302 18th St., Everett



ESTUARIES

Ebey Waterfront Park

1404 First St., Marysville

Meadowdale Beach Park

6026 156th SW, Edmonds

Padilla Bay National Estuarine Research Reserve

10441 Bayview-Edison Rd., Mount Vernon

FARMERS MARKETS - EBT MATCH

Arlington Farmers Market - Saturdays -

10AM-2PM - Through September

114 N. Olympic Ave., Arlington

Everett Farmers Market - Sundays -

10:30AM-3PM - Through October

2930 Wetmore Ave., Everett



Marysville Farmers Market - Fridays - 2PM-6PM - Through August 25

State & 3rd St., Marysville

Lake Stevens Farmers Market - Wednesdays - 3PM-7PM - Through August

1806 Main St., Lake Stevens

Monroe Farmers Market - Fridays - 3PM-6PM - Through October

1 Galaxy Way, Monroe

Snohomish Farmers Market - Thursdays - 3PM-7PM - Through September

Cedar Ave. & Pearl St., Snohomish

Stanwood Farmers Market - Fridays

- 2PM-6PM - Through October 6

8727 271st St. NW, Stanwood

LEARN MORE



Dahlia Show - Floral Hall at Forest Park - August 19-20

Saturday, August 19 - 1PM-6PM Sunday, August 20 - 10AM-4PM

802 E. Mukilteo Blvd., Everett

Catch the colorful display of more than 2,500 dahlias as single blooms, triple blooms, 5-blooms, in baskets and in artistic arrangements. Free admission.

Edmonds Museum Summer Market - Saturdays - Through October 14

9AM-2PM

118 5th Ave. N, Edmonds

I Love Lake Day - Lundeen Park

Saturday, August 19 - 10:30AM-12:30PM

10020 Lundeen Park Way, Lake Stevens

Kla Ha Ya Days Festival - July 12, 9:30AM-July 16, 6PM

Snohomish Station Animal Hospital

2705 Bickford Ave., Snohomish

Mukilteo Lighthouse Festival - September 8-10

Lighthouse Park - 4902 76th St. SW, Mukilteo

Festival Hours:

- Friday, 4PM-Midnight
- Saturday, 10:30AM-Midnight
 - Children's Parade: 10:30AM
 - Grand Parade at 10:45AM
- Sunday, 11AM-5PM

Salty Sea Days - July 21-22

Friday, July 21 - 4PM-10PM

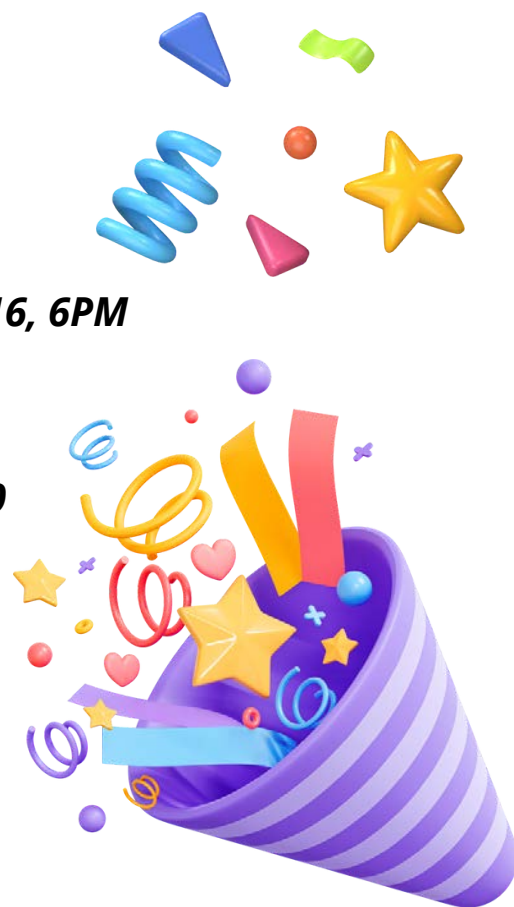
Saturday, July 22 - 12PM-10PM

2900 Wetmore, Everett

Downtown Everett Association's summer block party, Salty Sea Days, is a family-friendly community event in the streets of Downtown Everett. Join us for live music, food, a beer garden featuring Scuttlebutt Brewing, activities for kids, and more!

Sandblast Festival of the Arts - McCormick Park - July 22-23

26200 NE Stephens St., Duvall



Bob Heirman Wildlife Park at Thomas' Eddy

14913 Connelly Rd., Snohomish

Ebey Waterfront Park

1404 First St., Marysville

Gissberg Twin Lakes

16324 Twin Lake, Marysville

Hauge Homestead Park

1819 121st St. SE, Everett

Langus Riverfront Park

400 Smith Island Rd., Everett

Lake Cassidy

6216 105th Ave., NE, Lake Stevens

Lake Goodwin Community Park

4620 Lakewood Rd., Stanwood

Lowell Park

4605 S 3rd Ave., Everett

Martha Lake

16300 E. Shore Dr., Lynnwood

Meadowdale Beach Park

6026 156th SW, Edmonds

North Cove Park

1812 Main St., Lake Stevens

Rotary Park

3505 Lowell-Snohomish River Rd., Everett

Sunset Park

410 E. Lake Stevens Rd., Lake Stevens

Thornton A. Sullivan Park Silver Lake

11405 Silver Lake Rd., Everett



FOOD TRUCKS

Lunch & Launch - Saturdays - 11AM-2PM

10th St. & W. Marine View Dr., Everett

HORSESHOES

Forest Park

802 E. Mukilteo Blvd., Everett

INTERPRETIVE TRAILS/BOARDWALKS

McCollum Pioneer Park

600 128th St., SE, Everett

Spencer Island

5033 4th St. SE, Everett



LABYRINTHS

Bothell United Methodist Church

18515 92nd Ave. NE, Bothell

Falling Water Gardens

17516 WA-203, Monroe

This labyrinth is located in a retail garden center and is back in the expansive display gardens

Lebanon Park

105 Lebanon Ave., Arlington

St. Alban's Episcopal Church

21405 82nd Pl. West, Edmonds

St. Hilda St. Patrick Episcopal Church

15224 52nd Ave. W, Edmonds

Stanwood City Hall Park Labyrinth

10220 270th St. NW, Stanwood

Wiggums Hollow Park

2808 10th St., Everett

EBT/WIC Cardholder Discounts:

Pacific Science Center

Family Access Membership - \$19/year

To sign up for an Access Membership, visit in-person or call (206) 443-2844

Family Access Memberships Include:

- Unlimited free admission for up to 2 adults and 6 youth in the same household plus 2 named caregivers (nannies, grandparents, etc.)
- 50% discount on general admission for guests
- 20% discount on member IMAX tickets, evening laser show tickets, and theater concessions
- Early access to summer camp registration \$15 discount on camps
- ASTC Passport Program – reciprocal admission to more than 350 science centers worldwide*

Youth Access Memberships are available to foster youth, youth experiencing homelessness and their caregivers and any youth being raised by a relative or kinship caregiver who lives in Washington state. More information [here](#).

Seattle Aquarium

\$35 annual memberships

Covers two adults, up to six of their children (ages 18 and younger), plus one free guest with every visit.

\$5 general admission tickets for adults and youth; children ages 3 and younger free. Limit of six tickets per household (toddlers excluded from maximum). Tickets are available only at the Aquarium for the next available time slot. Online reservations are not available.

For more information on membership benefits, visit the [membership page](#). Memberships available only at the Aquarium's admission gate/next available entry time slot can be reserved at time of purchase.



Woodland Park Zoo

(206) 548-2500

North Entrance: 5500 Phinney Ave. N, Seattle

South Entrance: 750 N. 50th St., Seattle

\$5/per person or **\$35 for annual Explorer Pass for entry of 2 adults and up to 6 children.** Explorer pass is for EBT, WIC, Foster and Kinship Families. Must be [purchased at Zoo](#) with proof of ID and documentation of benefits.



Lynnwood Recreation Center

18900 44th Ave. W, Lynnwood

\$7 entrance fee per person for pool; 2 and under free.

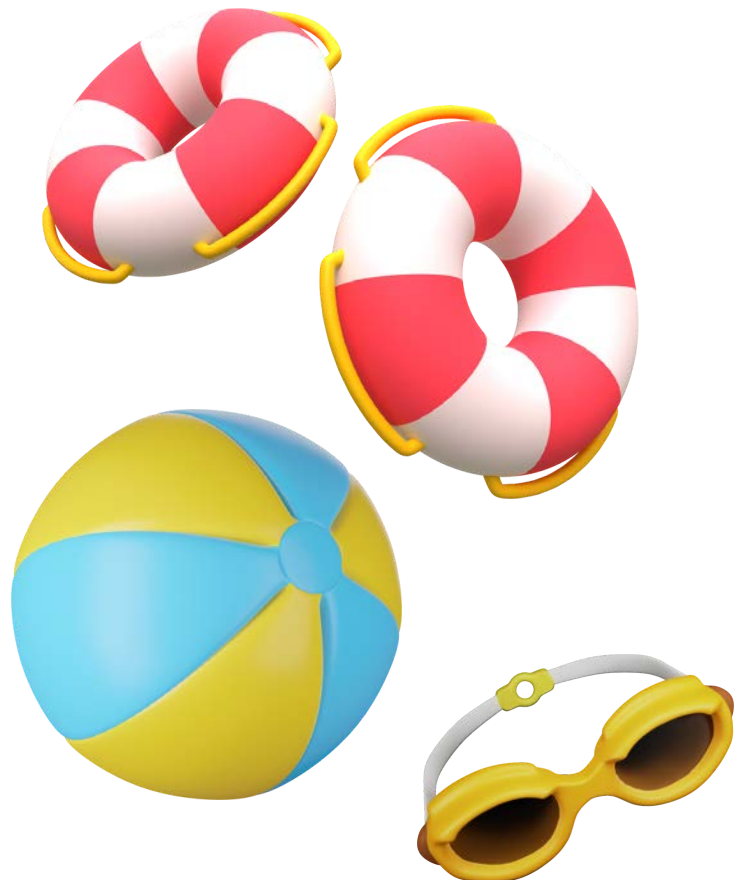
Recreation pool with lazy river, waterslides, beach (zero depth entrance area), children's splash area, lap pool, family hot tub, shallow water area, fitness room. **Must** [register online](#). View the schedule [online here](#).

Snohomish Aquatic Center

516 Maple Ave., Snohomish - (360) 568-8030

\$7.50 entrance fee per person;
\$16.50 Flow Rider Surf Simulator Session

Recreation pool with lazy river, waterslides, beach area (zero depth entrance), children's splash area, lap pool, hot tub, children's splash area, aqua basketball hoops. Flow Rider Surf simulator fee gains entrance to rest of recreation center. **Must register online** [here](#). Schedules [here](#).



Museums For All

EBT Card Holders discount - up to 4 people. Click Museum for more information.

- [Bellevue Arts Museum](#) (Bellevue, WA)
- [Burke Museum](#) (Seattle, WA)
- [The Center for Wooden Boats](#) (Seattle, WA)
- [Children's Museum of Skagit County](#) (Burlington, WA)
- [Children's Museum of Tacoma](#) (Tacoma, WA)
- [Columbia Pacific Heritage Museum](#) (Ilwaco, WA)
- [Foss Waterway Seaport](#) (Tacoma, WA)
- [Greater Kent Historical Society and Kent Museum](#) (Kent, WA)
- [Hands On Children's Museum](#) (Olympia, WA)
- [Henry Art Gallery](#) (Seattle, WA)
- [Imagine Children's Museum](#) (Everett, WA)
- [Jefferson Museum of Art & History](#) (Port Townsend, WA)
- [Kids Discovery Museum](#) (Bainbridge Island, WA)
- [KidsQuest Children's Museum](#) (Bellevue, WA)
- [LeMay – America's Car Museum](#) (Tacoma, WA)
- [Moses Lake Museum & Art Center](#) (Moses Lake, WA)
- [The Museum of Flight](#) (Seattle, WA)
- [Museum of History and Industry \(MOHAI\)](#) (Seattle, WA)
- [Museum of Pop Culture](#) (Seattle, WA)
- [National Nordic Museum](#) (Seattle, WA)
- [Northwest Railway Museum](#) (Snoqualmie, WA)
- [Palouse Discovery Science Center](#) (Pullman, WA)
- [REACH Museum](#) (Richland, WA)
- [Seattle Art Museum](#) (Seattle, WA)
- [Seattle Children's Museum](#) (Seattle, WA)
- [Tacoma Historical Society](#) (Tacoma, WA)
- [Washington State History Museum](#) (Tacoma, WA)
- [Wing Luke Museum of the Asian Pacific American Experience](#) (Seattle, WA)



Historic Everett Waterfront Harbor Tours - Jetty Landing Park

Throwback Thursday Events - August 3, 17, 31

10th St. & W Marine View Dr.

Reservations required: \$5 per person; 2 and under are free

The Port of Everett and Historic Everett are offering five "Throwback Thursday" Historic Everett Waterfront Harbor Tours on Thursdays in July and August aboard the 60-passenger Jetty Island Ferry. The guided tour explores Everett's former milltown days, when the lumber, fishing and maritime industries thrived.

Working Waterfront Harbor Tours

Wednesdays - August 9 & 23

Board Jetty Island Ferry at 5:45PM, tour is from 6-7PM.

If you're looking for a fun and educational waterfront experience, consider booking a spot on a Port of Everett Working Waterfront Harbor Tour. On select Wednesdays in July and August, the Port of Everett is offering four Working Waterfront Harbor Tours aboard the 60-passenger Jetty Island Ferry. The guided tour explores the diverse roles the Port of Everett plays along the waterfront from the operation of its international seaport, public marina facilities, real estate development, environmental stewardship, public access, and more!

Jetty Island Days - July 5-September 3

Reservations Required: \$3-\$5 per person; children 2 and under free

Passenger ferry departs from Jetty Landing, adjacent to the boat launch at 10th Street and W. Marine View Drive. Reservation confirmation will come with an option to pre-purchase Visitor Parking at Jetty Landing at a discounted rate of **\$2 (plus taxes and fees)** for up to 8 hours

Wednesday - Thursday: 10 a.m. - 5:45 p.m.

Friday & Saturday: 10 a.m. - 6:45 p.m.

Sunday: 10 a.m. - 5:45 p.m.



Northwest Stream Center & Adopt A Stream Foundation

600 128th St. SE, Everett - (425) 316-8592

Email: aasf@streamkeeper.org

Reservation required for some walks

Monday: Closed

Friday: 10AM-4PM

Tuesday: 10AM-4PM

Saturday: 10AM-4PM

Wednesday: 10AM-4PM

Sunday: Closed

Thursday: 10AM-4PM

Learn about stream, wetland and forest ecology. Visitor Center; Nature Trail that includes Trout Stream Exhibit where you can see trout, crayfish, sculpin, freshwater mussels; native bottom fish; elevated forest & wetland walk that winds through 25-30 acres three-feet above the forest floor and surrounding wetlands next to North Creek. More information [here](#).

The Little Gym

7207 Evergreen Way, Suite R, Everett

(425) 348-4848 - More [information here](#).

Email: tlgeverettwa@thelittlegym.com

Financial Aid available - 60-100% off tuition

Drop-In Rate: \$27 per person

YMCA

(425) 374-5779

Recreation and lap pool, fitness/workout rooms, childcare, camps, classes

Financial aid available - sliding scale rates

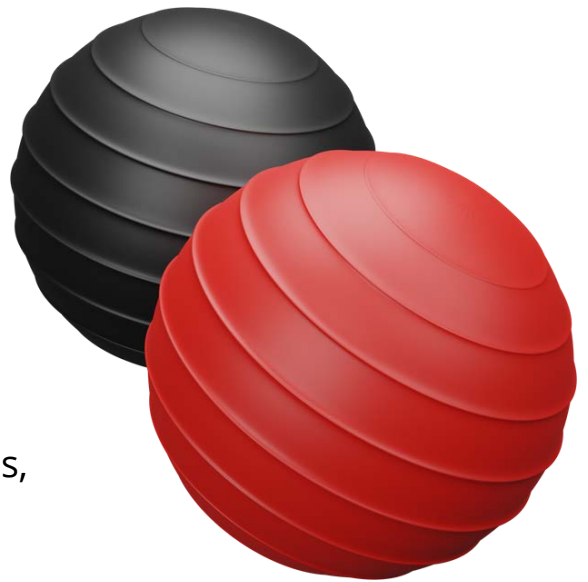
Locations:

4730 Colby Ave., Everett

6420 60th Dr. NE, Marysville

13723 Puget Park Dr., Everett
(Mill Creek)

10601 47th Pl. W, Mukilteo



MOUNTAIN BIKE TRAILS

Duthie Hill Park

27101 SE Duthie Hill Rd., Issaquah

Paradise Valley Conservation Area

23210 Paradise Lake Rd., Woodinville

Squire Creek Park & Campground

41415 Highway 530, Arlington



MOVIES

Fridays "Sail-In" Cinema at the Marina - Everett

Boxcar Park - 615 13th St., Everett

Friday Nights - July 21-August 25

July 28: 9:10PM

Top Gun: Maverick (PG-13)

August 4: 9PM

The Goonies (PG)

August 11: 8:45PM

Lightyear (PG)

August 18: 8:35PM

Clueless (PG-13)

August 25: 8:20PM

Fantastic Beasts (PG)

Saturday Movies at Jennings Park Pavilion - Marysville

6915 Armar Rd., Marysville

Saturdays at 9PM - July 15-August 12

July 29:

Strange World (PG)

August 5:

*Black Panther: Wakanda
Forever* (PG-13)

August 12:

Luca (PG)



Children's Concert Series - Wednesdays at Noon (12PM)

Marysville Jennings Park - 6915 Armar Rd., Marysville

July 26 - [The Harmonica Pocket](#)

August 2 - [Eric Ode](#)

Edmonds Summer Concerts - Sundays 3PM-4PM

City Park - 600 3rd Ave. S, Edmonds

July 23 - Show Brazil - Contemporary & Traditional Brazilian Music

July 30 - Duende Libre Quartet - Pan-Global Jazz Fusion

August 6 - The Gothard Sisters - Contemporary Celtic Music

August 13 - 85th Street Big Band - Swing of the 1930's, 40's, & 50's

August 20 - The Git Hoan Dancers (People of the Salmon) - Tsimshian Performance Group

Hazel Miller Plaza - Tuesdays & Thursdays 4:30PM-6PM

5th Ave. S & Maple St., Edmonds

Tuesdays

July 25 - Guitar Gil + Sorry Charlie

Leggett - Blues

August 1 - Danny Mendoza Latin Jazz Project

August 8 - Jenny Davis Jazz Trio

August 15 - The Sidekickers - Pop/Rock/Jazz

August 22 - Miho and Diego - Latino/Japanese/American Fusion

Thursdays

July 27 - Anar Dana - Dances from North Africa to Central Asia

August 3 - Saint John & The Revelations - R&B

August 10 - SeaStar - Americana

August 17 - Bread and Gravy - Blues/Rock/Pop

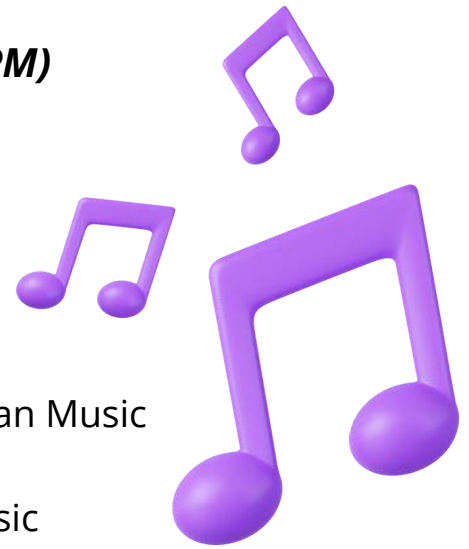
August 24 - Adrian Xavier - Reggae

Hickman Park - August 27 3PM-4PM

([more information](#))

23700 104th Ave. W, Edmonds

Sustain Music Project - Chamber Music Ensemble



Music at the Marina - Thursdays 6:30PM ([more information](#))

Port Gardner Landing - 1520 W. Marine View Dr., Everett

July 27 - Clinton Fearon

August 3 - Queen Mother

August 10 - Aaron Crawford

August 17 - Lady A

August 24 - Smokey Brights

August 31 - Leroy Bell

Puget Sounds Steel Drums Fridays August 12, 19, 26 5PM-7PM

Port of Everett Central Guest
Dock 5 Activity Barge

1028 13th St., Everett

Enjoy the sounds of the
Caribbean!



Sounds of Summer at Jennings Park Fridays 7PM-8:30PM

6915 Armar Rd., Marysville

July 28 - Red Light Challenge

August 4 - Wholesale Band



Padilla Bay National Estuarine Research Reserve

10441 Bayview-Edison Rd., Mount Vernon

Interpretive Center Wednesday through Saturday 10AM-4PM

The Padilla Bay Reserve is nestled just north of the quiet community of Bay View, Washington, 15 minutes west of I-5 in Skagit County. Here in the heart of the Salish Sea, we study and protect a massive eelgrass meadow. At more than 8,000 acres, it's the second largest on North America's Pacific Coast. When you enter the Breazeale Interpretive Center, you're invited to browse through the exhibits and observe sea stars, urchins, and other marine life in the aquarium room. Our nearby trails and overlook site give you the opportunity to see eagles, herons, ducks, and other birds that live here year-round or pass through on their migratory paths. Free workshops and events:

<https://www.padillabayfoundation.org/>

Skagit River Bald Eagle Interpretive Center

Howard Miller Steelhead Park - 52809 Rock Park Rd., Rockport

Saturdays & Sundays - 10AM-4PM

(360) 853-7626 srbeatic@frontier.com

Guided Nature Hikes: 11AM & 1:30PM Saturdays & Sundays

Offers guided nature hikes that take about 90 minutes and follow the Sauk-Skagit Reach trail in Howard Miller Steelhead Park. These interpretive walks focus on eagles, salmon, and their interconnected relationships within the Skagit River watershed. The Guided Nature Hikes are offered at 11:00am and 1:30pm every Saturday and Sunday. The mostly flat terrain is suitable for small children and older adults. Please dress according to the weather. Please do not bring your dog along on the Guided Nature Hike out of consideration of others and wildlife. Both the Guided Hikes and Presentations are free and open to the public. A donation to our organization would be greatly appreciated.



Bayview Trail

West of 83rd Ave. NE; Between 62nd St. NE & 84th St. NE, Marysville

Bob Heirman Wildlife Park at Thomas' Eddy

14913 Connelly Rd., Snohomish

Deering Wildflower Acres

4708 79th Ave. NE, Marysville

Esperance Park

7830 224th SW, Edmonds

Forest Trail Park

18005 Oxford Dr., Arlington

Howarth Park

1127 Olympic Blvd., Everett

Langus Riverfront Park

400 Smith Island Rd., Everett

Lake Stevens Community Park

1601 N Machias Rd., Lake Stevens

Lord Hill Regional Park

12921 150th St. SE, Snohomish

McCollum Pioneer Park

600 128th St. SW, Everett

Meadowdale Park

5700 168th St. SW, Lynnwood

Mesika Trail

19100 44th Ave. W, Lynnwood

Northpointe Park

70th St. & 75th Dr. NE, Marysville

Ebey Waterfront Park

1404 First St., Marysville

Forest Park

802 E. Mukilteo Blvd., Everett

Haller Park

1100 West Ave., Arlington

Gissberg Twin Lakes

16324 Twin Lake, Marysville

Lake Roesiger Park

1608 S Lake Roesiger Rd., Snohomish

Logan Park

1411 Logan Rd., Lynnwood

Lowell Park

4605 S 3rd Ave., Everett



Lake Stickney Community Park

13521 Manor Way, Lynnwood

Paradise Valley Conservation Area

23210 Paradise Lake Rd., Woodinville

River Crest Trail

6020 206th St. NE, Arlington

River Meadows Park & Campground

20416 Jordan Rd., Arlington

Skykomish River Park

413 Sky River Pkwy., Monroe

Stormwater Wetlands Park/Eagle Trail

1100 W Ave., Arlington

Tambark Creek Park

17217 35th Ave. SE, Bothell

Thornton Sullivan Park

11405 Silver Lake Rd., Everett

Twin Rivers Park

8003 SE 530th NE, Arlington

Whitehorse Park & Campground

46609 N Mountain Rd., Darrington

Willis D. Tucker Park

6705 Puget Park Dr., Snohomish



OUTDOOR FITNESS STATIONS

Northpointe Park

70th St. & 75th Dr. NE, Marysville

Skykomish River Park

413 Sky River Pkwy., Monroe

PICKLEBALL COURTS

Forest Park

802 E. Mukilteo Blvd., Everett

Legion Memorial Park

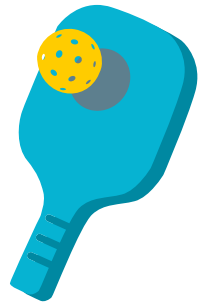
145 Alverson Blvd., Everett

Garfield Park

2300 Walnut St., Everett

Lowell Park

4605 S 3rd Ave., Everett



SKATE PARKS

Arlington Skate Park

18501 59th Ave. NE, Arlington

Debra Barto Memorial Skatepark

6722 Totem Beach Rd., Tulalip

Snohomish Skate Park

400 2nd St., Snohomish

Martha Lake Airport Skate Park

14611 4th Ave. W, Lynnwood

Marysville Skate Park

1050 Columbia Ave., Marysville

Wiggums Hollow Park

2808 10th St., Everett

Walter E. Hall Park

1226 W Casino Rd., Everett

West Lake Stevens Skate Park

Cavalero Hill Park

7708 20th St. SE, Lake Stevens



SOCCKER FIELDS

Bill Quake Memorial Park

18501 59th Ave. NE, Arlington

Martha Lake Airport Park

200 156th St. W, Lynnwood

Skykomish River Park

413 Sky River Pkwy., Monroe

Forsgren Park

23109 Carter Rd., Bothell

Paine Field Community Park

11928 Beverly Park Rd., Everett

Tambark Creek Athletic Field

3829 176th St. SE, Bothell

SUNSET/VISTAS

Bayview Trail

West of 83rd Ave. NE, between 62nd St. NE & 84th St. NE, Marysville

Grand Avenue Park

1800 Grand Ave., Everett

Harborview Park

1621 Mukilteo Blvd., Everett

Howarth Park

1127 Olympic Blvd., Everett

Langus Riverfront Park

400 Smith Island Rd., Everett

Legion Memorial Park

145 Alverson Blvd., Everett

Lowell Park

4605 S 3rd Ave., Everett

Rotary Park

3505 Lowell-Snohomish River Rd., Everett



Davies Beach (aka Wyatt Park)

10508 Chapel Hill Rd., Lake Stevens

Gissberg Twin Lakes

16324 Twin Lake, Marysville

Flowing Lake Park & Campground at Leckie's Beach

17900 48th St. SE, Snohomish - **\$10 day-use fee**

Hauge Homestead Park

1819 121st St. SE, Everett

Lake Goodwin Community Park

4620 Lakewood Rd., Stanwood

Lundeen Park

10020 Lundeen Park Way, Lake Stevens

Martha Lake

16300 E Shore Dr., Lynnwood

Lake Roesiger Park

1608 S Lake Roesiger Rd., Snohomish

North Cove Park

1812 Main St., Lake Stevens

Sunset Park

410 E Lake Stevens Rd., Lake Stevens

Twin Rivers Park

8003 SE 530th NE, Arlington

Thornton Sullivan Park

11405 Silver Lake Rd., Everett

Wenberg County Park

15430 E Lake Goodwin Rd., Stanwood
\$10 day-use fee



TENNIS COURTS

Forest Park

802 E. Mukilteo Blvd., Everett

Garfield Park

2300 Walnut St., Everett

Howarth Park

1127 Olympic Blvd., Everett

Lake Stevens Community Park

1601 N Machias Rd., Lake Stevens

Legion Memorial Park

145 Alverson Blvd., Everett

Lowell Park

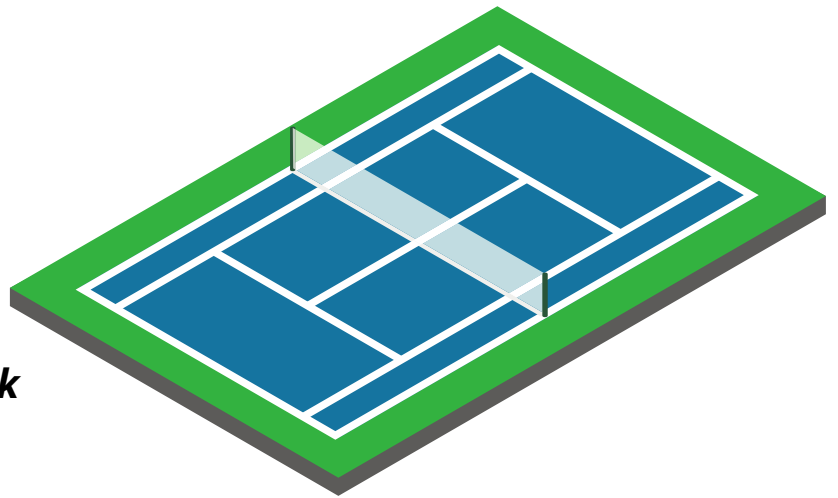
4605 S 3rd Ave., Everett

Twin Rivers Park

8003 SE 530th NE, Arlington

Willis D. Tucker Community Park

6705 Puget Park Dr., Snohomish



URBAN WALKING & BIKING TRAILS

Airport Trail

Access around Arlington Airport Complex, Arlington:
43rd Ave. & 51st Ave. at 172nd
Parking at Cemetery Rd. and at 188th St.

Ebey Waterfront Trail

1404 First St., Marysville



Centennial Trail

Snohomish to Skagit County - Multiple Entrances:

CT NORTH - 32328 SR 9, Arlington

20TH ST. - 13205 20th St. NE, Lake Stevens

BRYANT - SR 9 & Stanwood-Bryant Rd.

MACHIAS - 1624 Virginia St., Snohomish

ARMAR RD. - 15333 67th Ave. NE, Arlington

PILCHUCK - 5801 S Machias Rd., Snohomish

GETCHELL - 8318 Westlund Rd., Arlington

LAKE CASSIDY (Disabled Parking Only) - 6216 105th Ave. NE, Lake Stevens

HALLER PARK - 1100 W Ave., Arlington

RHODODENDRON - 10911 54th Pl. NE, Lake Stevens

LEGION PARK - 114 N Olympic, Arlington

SR 92 - 3651 127th Ave. NE, Lake Stevens

Interurban Trail

Everett Mall to Lynnwood Access via Trailhead: 41st & Colby S Sidewalk of 41st McCollum Pioneer Park - 600 128th St. SE, Everett

Near Mariner Park & Ride

Near Ash Way Park & Ride

Near Lynnwood Transit Center

Milltown Trail

Port of Everett, along Marine View Dr., Grand Ave., Pacific Ave., Everett

Mountlake Terrace Interurban Trail Entrance

77th Pl. W & 228th St. SW, Mountlake Terrace ([info here](#))

Pigeon Creek Trail

3501 Pigeon Creek Rd., Everett

Whitehorse Regional Trail - Arlington

Miller Shingle - 21021 State Rte. 530 NE

C-Post Rd. - 29415 SR 530 NE

Darrington - Price Street

Hazel Hole - Mile Post 38.8 SR 530

Trafton - 26703 115th AVE. NE

Forston Mill Rd. - State Rte. 530

Davies Beach (aka Wyatt Park)

10508 Chapel Hill Rd., Lake Stevens

Gissberg Twin Lakes

16324 Twin Lake, Marysville

Haller Park

1100 W Ave., Arlington

Jennings Nature Park

6915 Armar Rd. or 6309 53rd Ave., Marysville

Lord Hill Regional Park

12921 150th St. SE, Snohomish

Lowell Riverfront Park

Lowell-Snohomish River Rd., Everett

Martha Lake Park

16300 E Shore Dr., Lynnwood

Lighthouse Park

4902 76th St. SW, Mukilteo

North Cove Park

1812 Main St., Lake Stevens

Rotary Park

3505 Lowell-Snohomish River Rd., Everett

Silver Lake - Thornton A. Sullivan Park

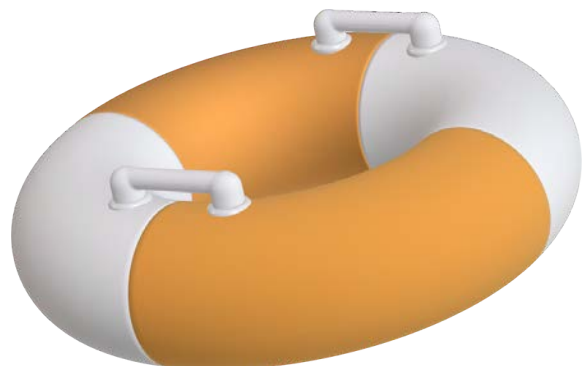
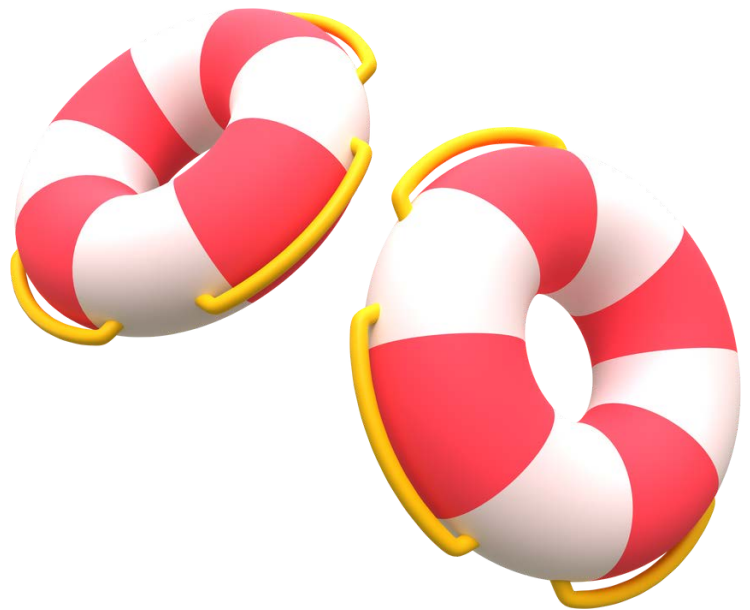
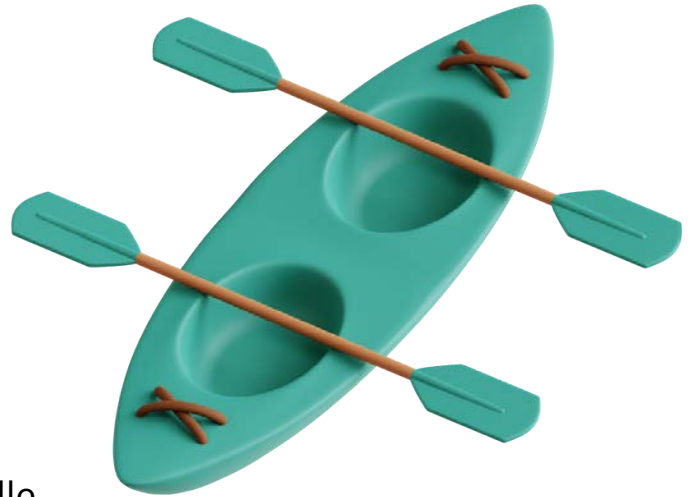
11405 Silver Lake Rd., Everett

Sunset Park

410 E. Lake Stevens Rd., Lake Stevens

Twin Rivers Park

8003 SE 530th NE, Arlington



WATER PLAYGROUNDS/SPLASH PADS

Forest Park

802 E Mukilteo Blvd., Everett

Haller Park

1100 W Ave., Arlington

Comeford Park

514 Delta Ave., Marysville

Willis D. Tucker Park

6705 Puget Park Dr., Snohomish



VOLLEYBALL COURT

Willis D. Tucker Park

6705 Puget Park Dr., Snohomish

VOLUNTEER OPPORTUNITIES

Adopt-A-Stream - See Northwest Stream Center

600 128th St SE, Everett (425) 316-8592 aasf@streamkeeper.org

City of Everett Volunteer Event Search - [CEDAR](#)

Spend time with the family, meet new people, and get outside into nature, all while helping to keep Everett's parks healthy and green. No experience is necessary, and all tools are provided.

Forest Steward

Be a hero for your favorite park! A core group of volunteer Forest Stewards are essential to the [Green Everett Partnership's](#) success. If you want to learn how to lead your own forest restoration project, get other volunteers involved, and bring some much-needed TLC to a park you love, we want you to join us! For more information or to RSVP, [email Green Everett](#) or call 425-257-8300 option 2.

UW Farm Volunteer Party - Information [here](#)

Local foodbanks have volunteer opportunities as well!

WETLANDS

Cavalero Hill Park

7708 20th St. SE, Lake Stevens

Narbeck Wetland Sanctuary Park

6900 Seaway Boulevard, Everett

Lake Cassidy Wetlands Park & Interpretive Center Trailhead

6216 105th Ave. NE, Lake Stevens

Lord Hill Regional Park

12921 150th St. SE, Snohomish

McCollum Pioneer Park

600 128th St. SE, Everett

Stormwater Wetlands Park/Eagle Trail

1100 W Ave., Arlington

Tambark Creek Park

17217 35th Ave. SE, Bothell

Meadowdale Beach Park

6026 156th SW, Edmonds

River Crest Trail

6020 206th St. NE, Arlington

WILDLIFE VIEWING

Bob Heirman Wildlife Park at Thomas' Eddy

14913 Connelly Rd., Snohomish

Country Charm Park

8818 E Gilman Ave., Arlington

Ebey Waterfront Park

1404 First St., Marysville

Lord Hill Regional Park

12921 150th St. SE, Snohomish

McCollum Pioneer Park

600 128th St. SE, Everett

Narbeck Wetland Sanctuary Park

6900 Seaway Boulevard, Everett

Paradise Valley Conservation Area

23210 Paradise Lake Rd., Woodinville

Picnic Point Park

7231 Picnic Point Rd., Edmonds

River Crest Trail

6020 206th St. NE, Arlington

